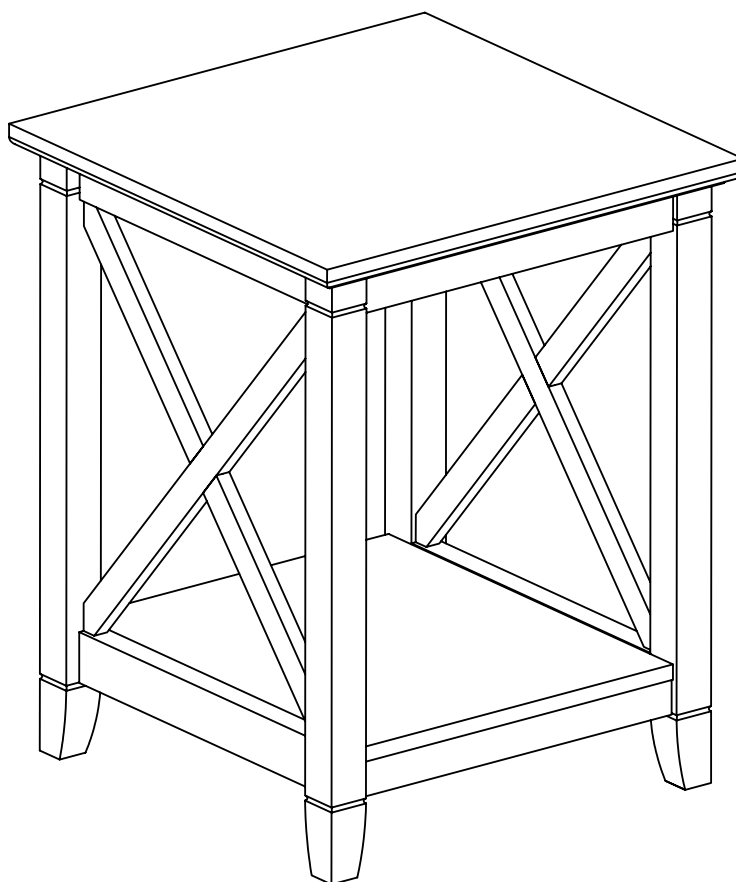


# ASSEMBLY INSTRUCTIONS

## Important Safety Instructions:

- Please read all instructions before beginning assembly
- Please make sure receive all the parcels to start the assembly
- For your safety and convenience, assembly by two people is recommended
- Use the parts and hardware lists to identify and separate each of the components included
- Save all packing materials until assembly is completed to avoid the accidental discarding of smaller parts or hardware



THANK YOU FOR PURCHASING

# PARTS LIST

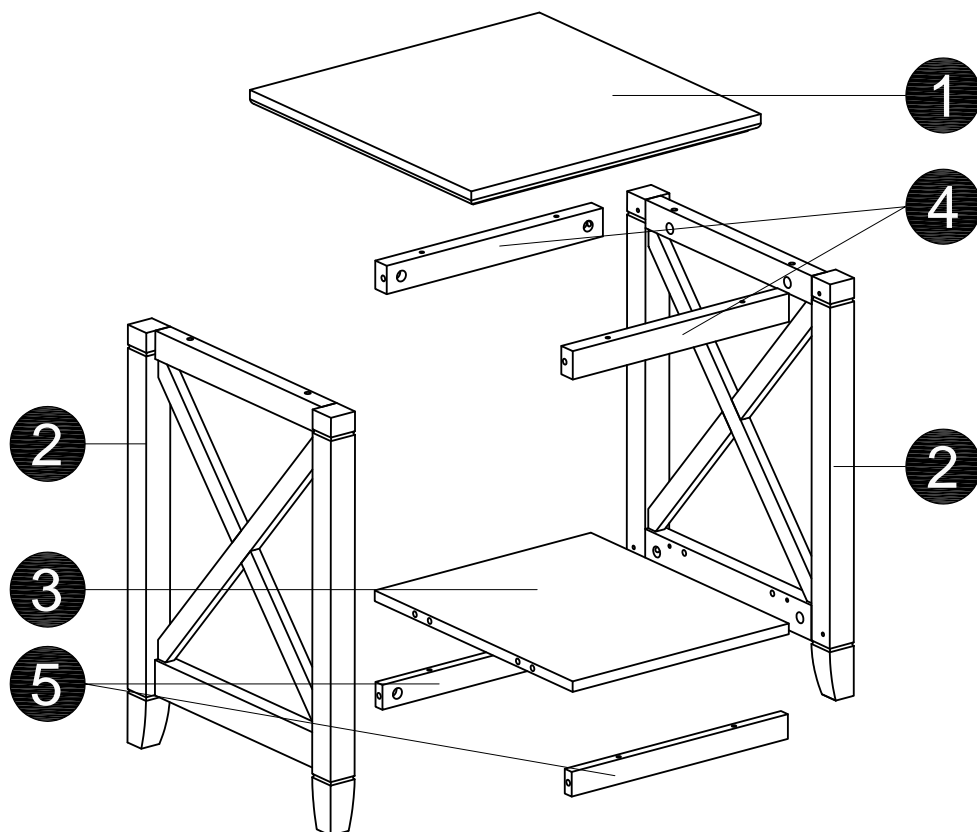
① X1

② X2

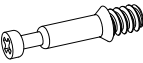


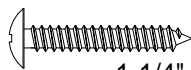
③ X1

④ X2

⑤ X2

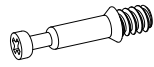


# HARDWARE LIST

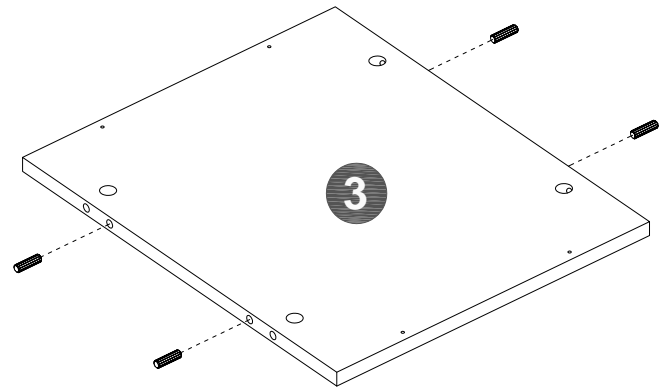
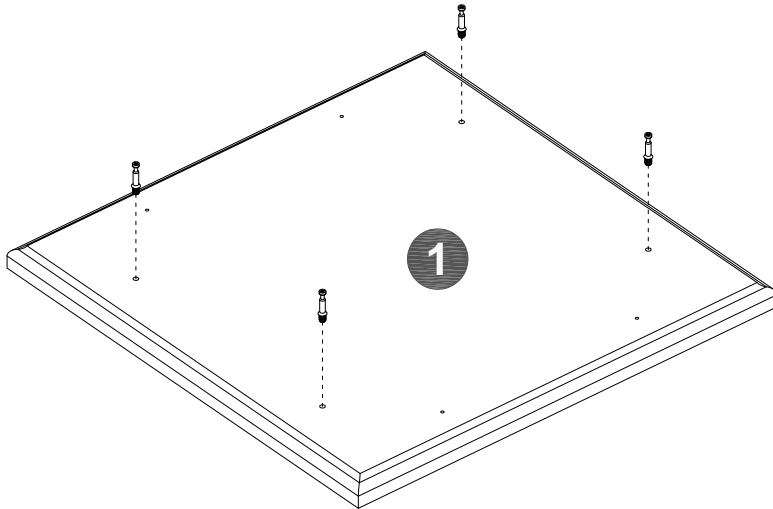
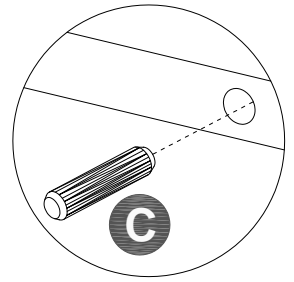
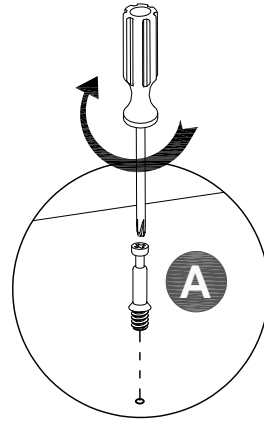
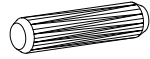
Name	Part	Qty.	Spare
A		16	1
B		16	1
C		4	1
D	 1-1/4" Screw	8	

## STEP 1

**A** x 4pcs

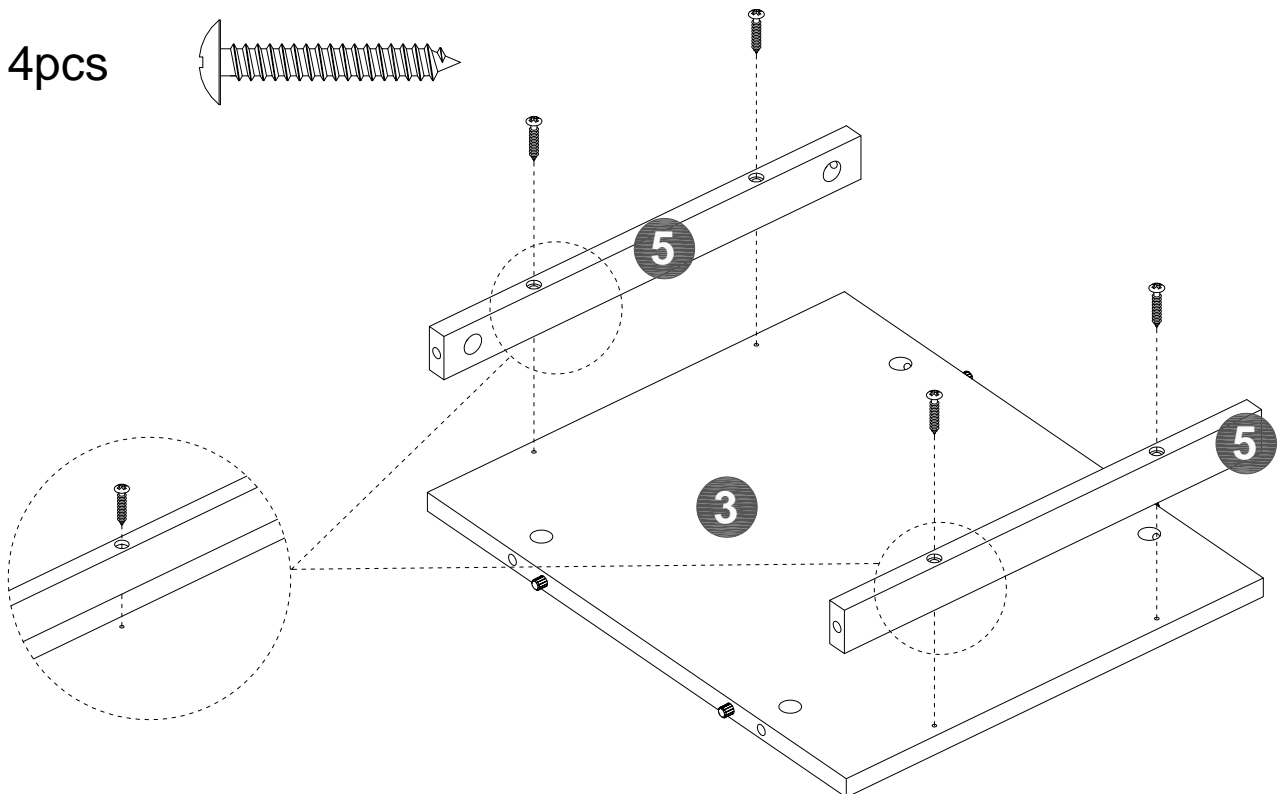
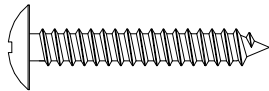


**C** x 4pcs



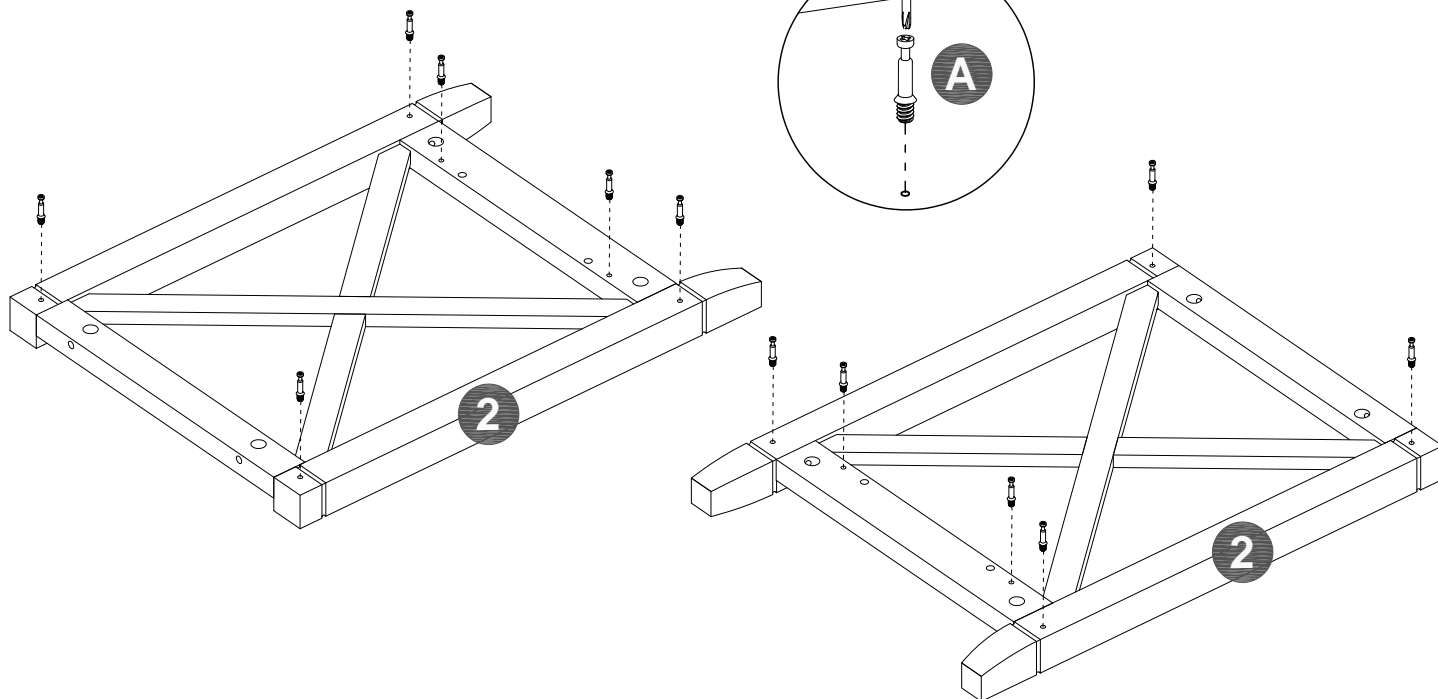
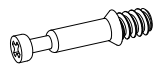
## STEP 2

**D** x 4pcs



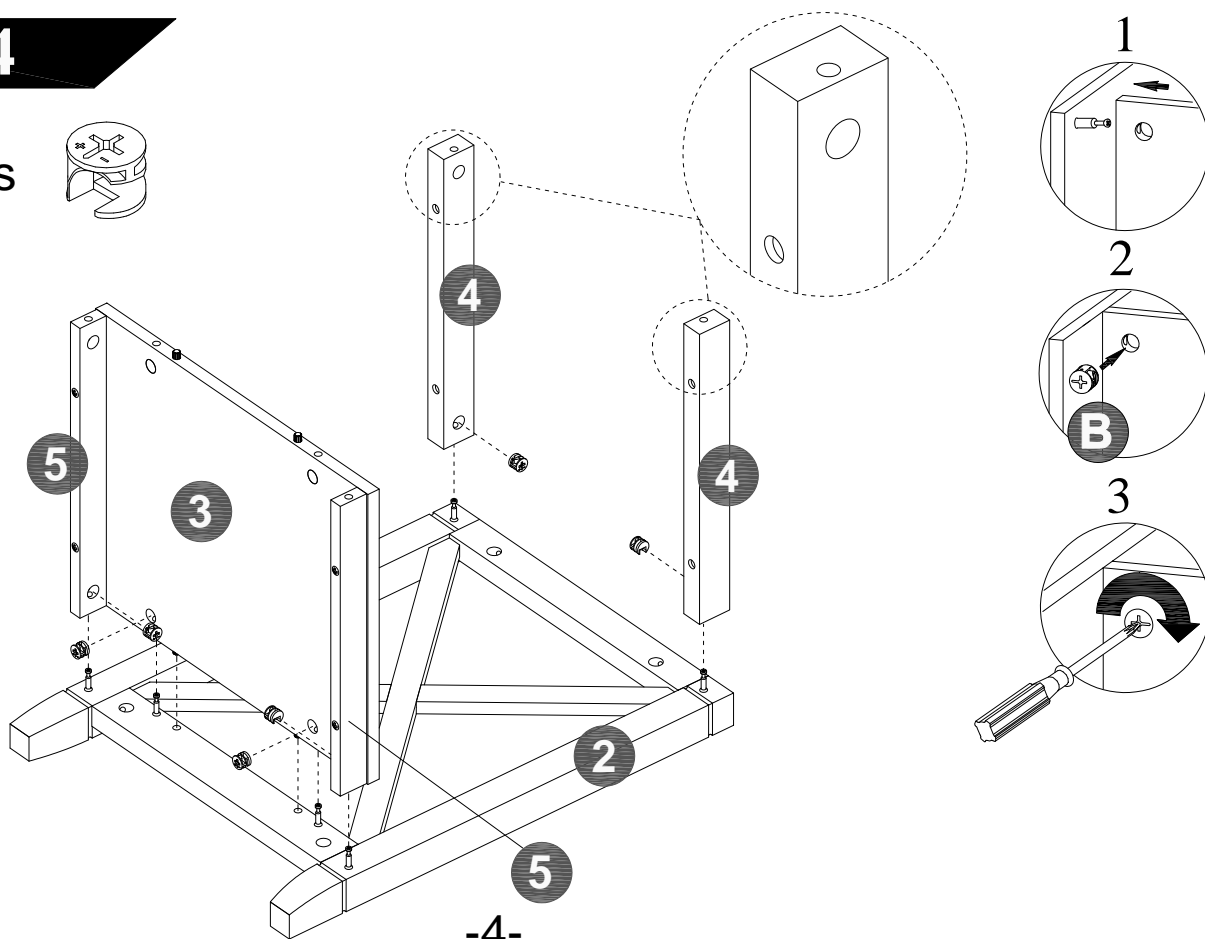
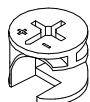
## STEP 3

**A** x 12pcs



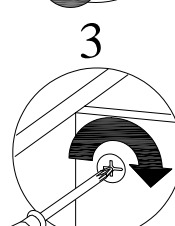
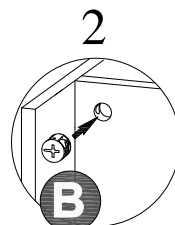
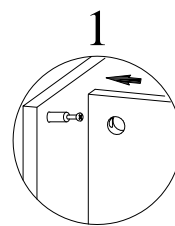
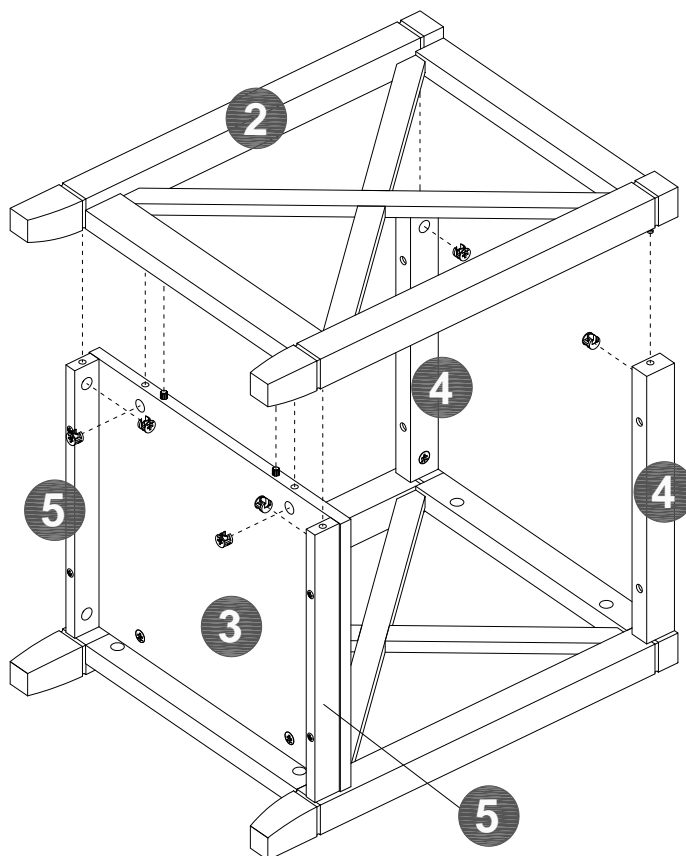
## STEP 4

**B** x 6pcs



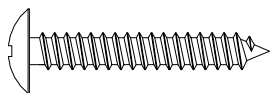
## STEP 5

**B** x 6pcs

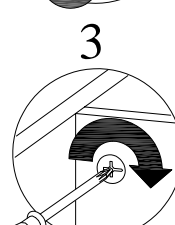
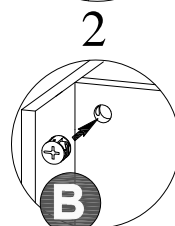
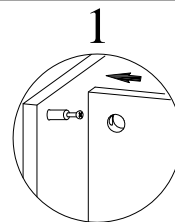
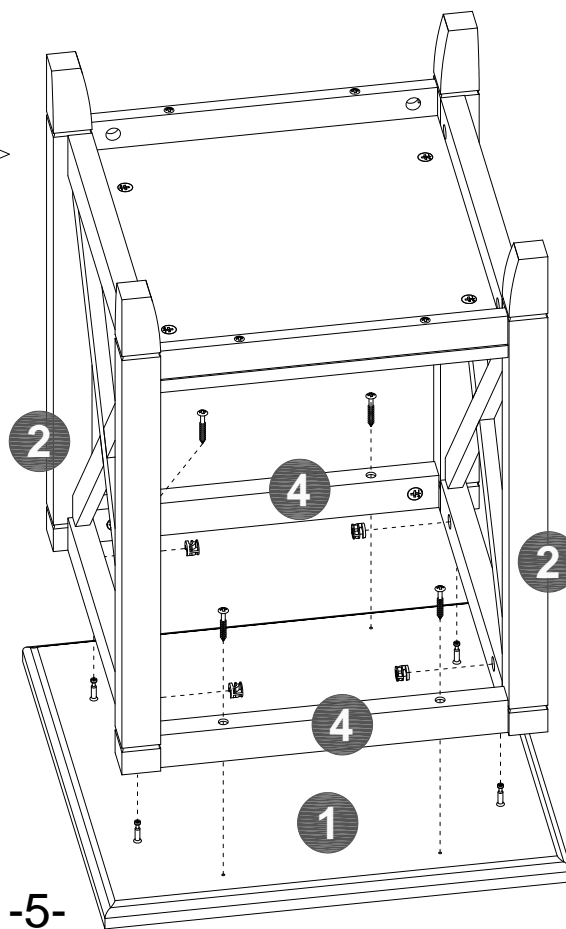


## STEP 6

**D** x 4pcs



**B** x 4pcs



## Maximum weight capacities

